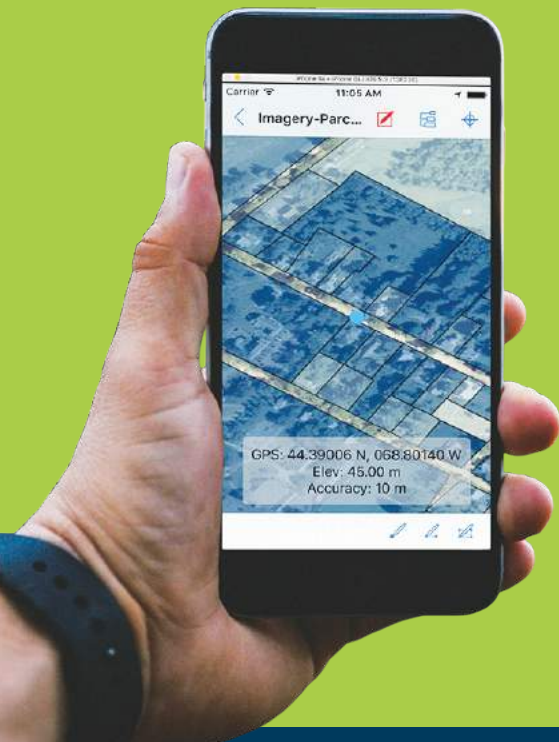


All the maps you need in the palm of your hand

SOFTWARE HIGHLIGHTS

- Remote access to your GIS data
- GPS-based field data collection
- Digitizing or drawing tools
- Assignment of attribute data
- Efficient data deployment and return
- Self-contained map storage, display
- No data connection required



Carry Global Mapper with You

Global Mapper Mobile is a powerful GIS data viewing and field data collection application for iOS that utilizes the device's GPS capability to provide situational awareness and locational intelligence for remote mapping projects.

REMOTE ACCESS TO ALL YOUR GEOSPATIAL DATA

Used in conjunction with the desktop version of Global Mapper, Global Mapper Mobile is capable of displaying over 250 formats of raster and vector spatial data without the need for a continual data connection.

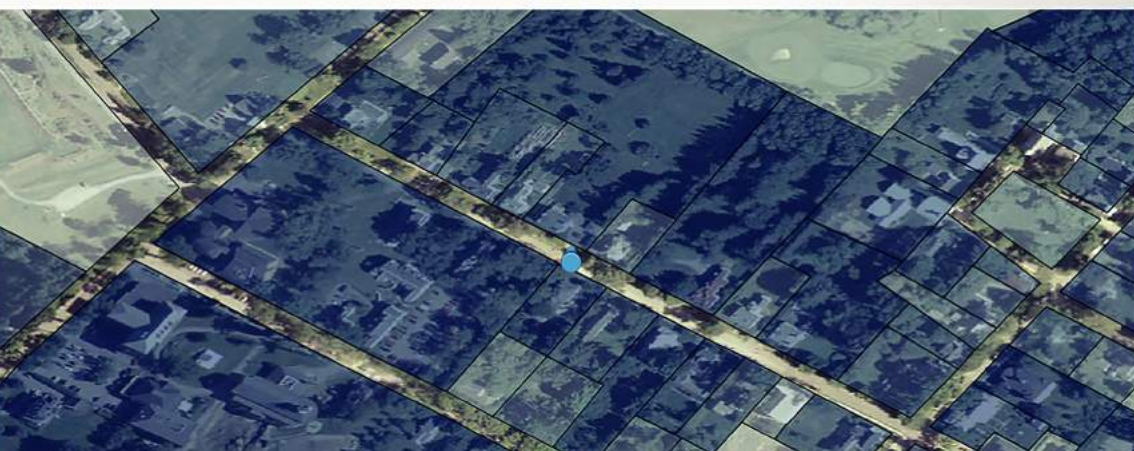
GPS-ENABLED DATA COLLECTION

On-device data collection is made simple and efficient with preconfigured collection parameters. Simply tap on the screen or automatically tag your current GPS location and use the onscreen form to assign the required attributes. Consistency and accuracy is ensured in the data collection process through the use of pick lists, required entries, etc.



Download Global Mapper Mobile
for free from the App Store

www.blumarblegeo.com/products/global-mapper-mobile.php



Line Create Mode



Manual Tap

Vertices at tap locations



GPS Tap

Vertices at GPS locations



GPS Auto Distance

Record GPS locations



GPS Auto Time

Record GPS locations

Global Mapper Mobile is currently available at no cost from the App Store and includes some sample datasets for evaluation. The transfer of any additional data to or from the mobile app, requires a licensed copy of Global Mapper version 17.2 or newer.

ON-DEVICE DIGITIZING

Beyond simply creating waypoints or track files, Global Mapper Mobile offers a full suite of digitizing tools for manually drawing lines, points, and polygons and for managing the attributes associated with these features.

AUTOMATIC PHOTOGRAPH GEOTAGGING

What better way to record the visual characteristics of a project site than by capturing a photograph. Global Mapper Mobile helps organize photographs taken with the iPhone or iPad's built-in camera by attaching them to the location at which they were taken?

EMPOWERING YOUR MOBILE WORKFORCE WITH ACCESSIBLE GIS TOOLS

Global Mapper Mobile, along with the desktop version of the software, provides a powerful and efficient utility for expanding the reach of an enterprise or organizational GIS to those who need it most: the field technicians or front line operators who carry out the critical work of remote data collection and verification. Through its extensive format support and compatibility with all common spatial database formats, Global Mapper serves as the stepping stone between your enterprise GIS infrastructure and your field operations.

SIMPLE AND EFFICIENT DATA TRANSFER

The transfer of data to and from the application is effectively handled using the File Sharing function in iTunes or via email. Using these simple procedures, Global Mapper Mobile Package (GMMP) files can be deployed to one or more compatible devices. On returning from the field, the modified files are quickly uploaded into the desktop version of Global Mapper where the data can be merged, edited, analyzed, and, if necessary, exported in one of dozens of supported formats or written into a spatial database.

WHY GO MOBILE?

Global Mapper Mobile is a perfect complement to the desktop version of Global Mapper and is a must-have for anyone needing access to maps and GIS data in a disconnected environment:

- Field technicians
- Natural resource managers
- Utility line workers
- Research scientists
- Engineers and site managers
- Foresters
- Emergency response personnel
- Recreational users

RESOURCES

- Free monthly webinars
- Training classes
- Getting Started guide
- Academic curriculums
- *public, online and custom*
- Social media user groups

www.blumarblegeo.com